

Internet Exchange for cc:Mail

...the best email gateway software in the world

Internet Exchange is the best way to connect cc:Mail users to the Internet.

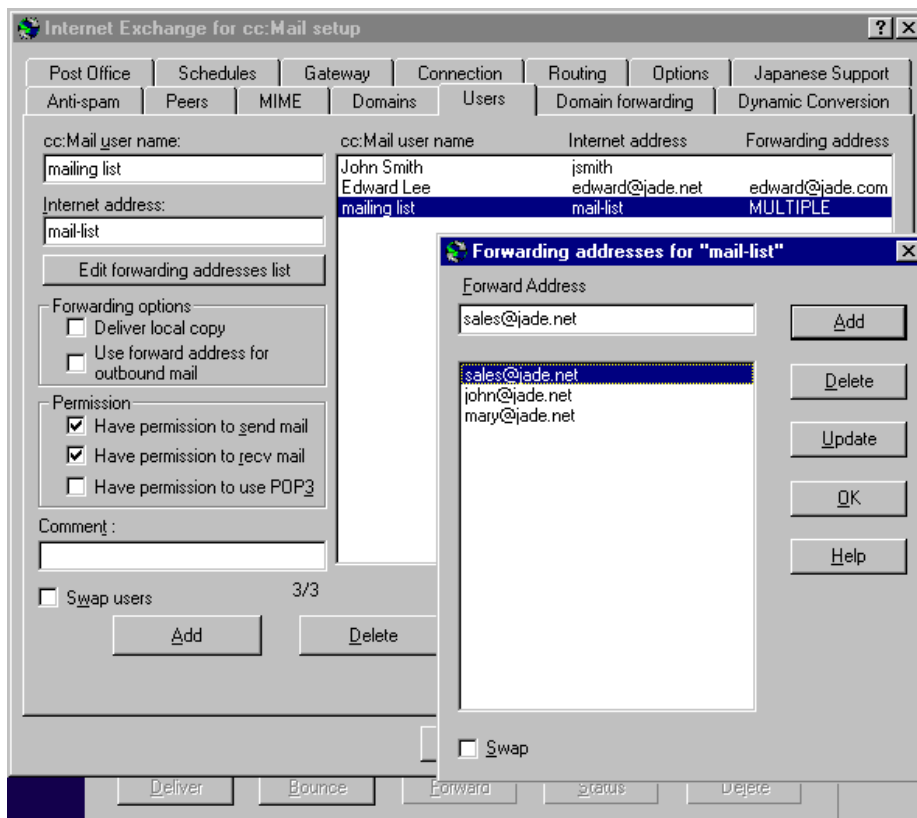
It connects your local cc:Mail network to the Internet and to your internal networks.

The Best Email Gateway Software in the World

Internet Exchange is a powerful 32-bit/multi-threaded email gateway and MTA between any cc:Mail network and the Internet. It takes messages and user addresses from the cc:Mail environment and converts them into the format understood by the Internet. Conversely, Internet Exchange converts Internet messages and addresses into a format compatible with the cc:Mail environment. These conversions are automatic and transparent to the users in both environments. The exceptional design of Internet Exchange and its many simple-to-use features save network managers time and hassle, are easy to maintain, and allow users to send and receive absolutely anything.

“We installed IMA [Internet Exchange] last January and it has been everything the vendor claimed. It's incredibly easy to manage, install and maintain. We have cc:Mail release 8.x, 6.x and 5.x post offices and it works great with all of them. Highly recommend it.”

*Shep Byrd, Network Engineer
North Carolina Dept. of Environment
and Natural Resources Information
Technology Services Division*



“...what all the staff expects is easy access to the Internet... The staff members love Internet Exchange and I don't have to spend my time fixing gateway problems.”

*Ron Hood, Manager of Network
Administration, Hutchinson Center*

Send and Receive Anything

Internet Exchange gives cc:Mail users the ability to exchange files easily with colleagues around the world, regardless of the mail system they may have on their desktop. Internet Exchange fully supports the Internet MIME standard for exchanging multiple part multi-media messages. This full support for MIME means that your cc:Mail users can exchange messages, and any kind of attachment, with other email users on the Internet. Among others, the following are supported: Apple BinHex, Apple Single and Double, Quoted Printable and UUENCODE.

Internet Exchange for cc:Mail

...the best email gateway software in the world

Simple to Use

Internet Exchange is managed by the local administrator by means of an intuitive point-and-click user interface running under Microsoft Windows. Clear system management screens and choices provide rapid access to all the gateway operations, allowing administrators to view and modify all gateway activity; it is also possible to manage Internet Exchange remotely via a web-browser Remote Control. The gateway acts as a full Internet router, eliminating the need for any additional UNIX (or equivalent) system to handle mail routing. Sending Internet email is easy for users, owing to the Internet Exchange's full integration with their familiar cc:Mail client. Incoming messages are deposited in users' private cc:Mail boxes. It looks and feels just like using cc:Mail.

Save Time with "Rules Based Addressing"

Internet Exchange gives administrators complete flexibility with address translations. Flexible address management between cc:Mail user names and Internet addresses allows network administrators to select their own address translations between the two address formats, and when new users are added to the cc:Mail Post Office their addresses are translated automatically. This results in significant time savings over conventional manually maintained tables.

Anti-SPAM Functions

The anti-SPAM category of options are designed to control the reception of unsolicited and unwanted SPAM mail messages; an administrator may decide to automatically reject mail coming from any number of definable users, domains or IP address ranges. Internet Exchange is capable of recognizing a SPAMmer address in different portions of message headers, and once identified the offending message is handled by a SPAM mail processor in a manner previously chosen by the administrator.

"...it was easy to justify a software solution that was up and running in the first hour of receiving it. Internet Exchange sits in the corner and just works; I don't have to worry about it. We've made a good choice and we're very happy with it."

*Frank Wirsch,
Manager of Information Systems,
Scitor*

"I was on SMTP Link from Lotus. I installed Internet Exchange five months ago, and I've had absolutely NO problems with it since. If you're an administrator, trust me - take the money you're currently spending on Tylenol and use it to buy Internet Exchange."

*Chuck N. Colby,
Network Analyst
Weathernews, Inc.*

The screenshot shows the 'Internet Exchange for cc:Mail setup' window with the 'Anti-spam' tab selected. The window has a menu bar with options: Post Office, Schedules, Gateway, Connections, Routing, Options, Japanese Support, Anti-spam, Domains, Domain routing, MIME, Users, Peers, and Dynamic Conversion. The main area is divided into four sections:

- Do not accept mail from these senders:** A list box containing 'spammer@host.domain'. Buttons for 'Add', 'Remove', and 'Import' are present.
- Do not accept mail from these IP addresses:** A list box containing 'Address 202.75.0.1' and '202.75.3.1 to 202.75.3.10'. Buttons for 'Add', 'Edit', and 'Remove' are present.
- Check spammer address in:** A list of checkboxes: 'MAIL FROM' during SMTP connection (checked), From (checked), Reply-to (checked), Resent-from (checked), Sender (checked), and Return-path (checked).
- When receiving a spam mail:** A list of radio buttons: 'Send notification to postmaster' (checked), 'Delete the mail' (unchecked), 'Move it to SPAM directory' (unchecked), and 'Bounce the mail' (checked). Below this is a text box for 'Include this file in the bounce message:'.

At the bottom, there is a note: 'To specify a spammer domain, please make an entry under "Configure Peers Capabilities" and turn off the "Accept mail" permission.' followed by a button labeled '-> Goto Configure Peers..'. The window ends with 'OK', 'Cancel', 'Apply', and 'Help' buttons.

Internet Exchange for cc:Mail

...the best email gateway software in the world

Communicate with "Permission"

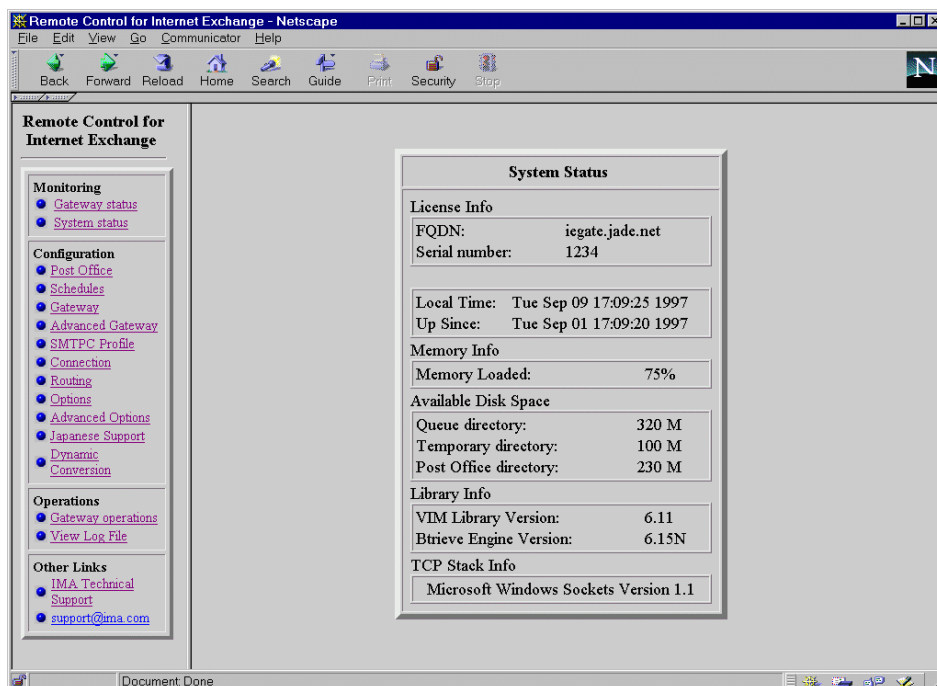
Internet Exchange allows you to establish "permissions" related to communication with remote sites. It is possible to disallow the sending or receiving of messages between your site and another, and even more specifically, between each of your users and another site. Before sending or receiving a message, Internet Exchange checks whether you allow messages between the origin and destination.

Communicate Using the "Peers" Functions

Internet Exchange allows you to fully define the capabilities of remote systems (Peers), including the attachment types that each site can decode. Before a message is sent, Internet Exchange determines which attachment types and encoding methods it is appropriate to utilize, based on what types and methods are supported by the recipient system.

Remote Management

Internet Exchange offers a browser-based remote control with diverse functions: a user can access the gateway-MTA securely via the World Wide Web to monitor the operation of Internet Exchange, to modify the gateway configuration, to view logfiles and system resources, to shut down or start up the gateway or some of its individual components and to schedule shut-down or start-up. The remote control is simple to use and explicit in functionality to the point that a new user could utilize it fully on a first attempt.



POP3

Internet Exchange provides Post Office Protocol Version 3 (POP3) access to cc:Mail LAN-based messaging environments. Thanks to Internet Exchange's integrated POP3 server, POP3 clients such as Eudora, Netscape Mail, Microsoft Internet Explorer, PC-Pine, Pegasus and many others can now access their cc:Mail environments using the POP3 protocol. Users now have the ability to use cc:Mail in their local environments while being able to continue accessing their email from anywhere across the Internet through Internet Exchange.

"The Internet Exchange gateway from IMA proved to be the gateway that fulfilled all requirements... configuration can be handled in-house at no extra cost. The project team strongly recommend the solution due to the capabilities it offers."

Trenton Potgier
Deloitte and Touche South Africa

"We are simply delighted with your Internet Exchange software package. It was amazingly simple to install and configure (almost too easy). We had it in operation the very same day we got the evaluation license back in the email."

DPC(SW) William D. Douse
Information Center Leading Chief
USS Constellation (CV-64)



Internet Exchange for cc:Mail

...the best email gateway software in the world

Installation and Support

Internet Exchange installs in less than thirty (30) minutes. It operates concurrently with other Windows applications, eliminating the need for a dedicated gateway machine for lightly loaded systems. Each copy of Internet Exchange includes one year of support. Additional support is available from IMA and our reseller partners.

What's New?

With its powerful 32-bit/multi-threaded technology, Internet Exchange is more robust than ever, and yet retains its trademark intuitive simplicity of use. New Internet standards have been added to its already impressive array to fashion the most comprehensive gateway-MTA of its kind; enhancements such as the Anti-SPAM functions, POP3 support, remote control, improved users' facilities/addressing, increased load capabilities and many others ensure that Internet Exchange will remain the best and most versatile email gateway software in the world.

Standards Compliance

- Windows Sockets Version 1.1
- VIM
- RFC-821 (Simple Mail Transfer Protocol)
- RFC-822 (Internet Text Message Format)
- RFC-974 (Mail Routing and Domain System)
- RFC-1034 (Domain Names - Concepts and Facilities)
- RFC-1035 (Domain Names - Implementation and Specification)
- RFC-1047 (Duplicate Messages and SMTP)
- RFC-1101 (DNS Encoding of Network Names and Other Types)
- RFC-1123 (Requirements for Internet Hosts - Application and support)
- RFC-1468 (Japanese Character Encoding for Internet Messages)
- RFC-1521 (Multi-purpose Internet Mail Extensions Part One: Mechanisms for Specifying and Describing the Format of Internet Message Bodies)
- RFC-1522 (Multi-purpose Internet Mail Extensions Part Two: Message Header Extensions for Non-ASCII Text)
- RFC-1740 (MIME Encapsulation of Macintosh Files - MacMIME)
- RFC-1741 (MIME Content Type for BinHex Encoded files)
- RFC-1806 (Content Disposition)
- RFC-1939 (POP3)
- RFC-1985 (SMTP Service Extension for Remote Message Queue Starting)

More Information

We invite you to visit our web-site at <http://www.ima.com> for more information, such as announcements, news, updates, revisions and the like. The web-site is updated on a regular basis. Should you require any specific item of information, please email us at info@ima.com.

Who uses Internet Exchange?

*American Express Publishing
Associated Press
AT&T
Bank of America
Bell Atlantic Internet Services
Boeing Computer Services
Canon Business Machines
CBS
Dataquest Europe
Defense Information Systems Agency
Deloitte & Touche
Dolby Laboratories
Federal Aviation Administration
Federal Reserve Board (USA)
Financial Times (UK)
Forbes Inc
Hitachi Computer Products
ITT
Lehman Brothers
Los Alamos National Laboratory (USA)
Merrill Lynch
NEC America
Northrop Gruman
Nynex
Octel Communications
Pacific Telesis Group
Philips
Prudential Securities
Seagate Software
Sony
Turner Broadcasting
UPS
US Robotics
U.S. Air Force
U.S. Army
U.S. Navy
U.S. Senate
Warner Brothers
White House (USA)*

Software Requirements

- One of the following:
 - Windows 95
 - Windows NT Server 3.51 or 4.0

Hardware Requirements

- 80486 or higher processor
- At least 16 MB of RAM for Windows 95
- At least 32 MB of RAM for Windows NT Server
- At least 200 MB of free hard disk space, although this is somewhat dependent upon message load mix

Internet Exchange for cc:Mail

...the best email gateway software in the world

Summary of Features

Compatible and Internet Standards

- Supports coexistence with all major LAN environments, including Novell NetWare, Microsoft LAN Manager, Banyan VINES, Artisoft LANtastic, DEC Pathworks, and IBM LANServer via a single network adapter.
- Compliant with RFC-821 (SMTP), 822 (Internet Text Message Format), 974, 1034, 1035 (DNS), 1047, 1101, 1123, 1468 (Japanese), 1521 (MIME), 1522, 1740 (MacMIME), 1741, 1806, 1939 (POP3), 1985, Windows Sockets Version 1.1, VIM.

Send and Receive Anything

- MIME encoding/decoding.
- Destination based attachment handling allows for the generation of non-MIME messages to non-MIME compliant sites.
- Extensive Apple Macintosh file attachment handling: MacMIME and BinHex as well as MIME and UUENCODE for PC's and UNIX.
- MIME encoding/decoding methods are configurable by the gateway administrator on a per file extension basis. For example, Microsoft Word files can be recognized and encoded differently from GIF or .exe files.
- UUENCODE attachment recognition. Messages that are sent with UUENCODE attachments are automatically decoded (includes messages generated via the Lotus Link to SMTP gateway).
- European language support. Internet Exchange automatically detects and encodes 8-bit text using the Quoted Printable encoding method.
- Japanese language support.
- Simple Mailing List Management allows to define address forwarding to multiple destinations.
- Migration to Lotus Notes enables a user base to gradually shift its messaging system.

Excellent Security

- Security protections include anti-spoofing, SMTP port reassignment, remote host restriction (inbound), and local user restriction (outbound).
- Anti-SPAM functions

No Headaches for Network Managers

- Remote Administration possible by means of a versatile remote control, which includes options to configure, monitor, operate, schedule, shut down and start up the gateway or components of the gateway.
- Windows-based administration provides a simple and natural view into gateway operations with complete control over all gateway activities.
- Rules based address translation allows administrators to select their own address translations between the cc:Mail Post Office and Internet address formats.
- Address test utility enables immediate view of bi-directional address translation results.
- Can use any combination of DNS, host table, and default host based routing, including mail routing using MX-records on the Internet, so the gateway can act as a full Internet mail router, eliminating the need for an additional UNIX (or equivalent) system to handle cc:Mail routing. There is also support for a local DNS cache, reducing DNS network traffic
- Internet Sub-domain assignment for cc:Mail post offices allows downstream post offices to be mapped to either sub-domains of the gateway, or to completely independent domain names.
- Operation is continuous during routine cc:Mail maintenance (chkstat, reclaim).
- Dynamic reconfiguration allows the gateway to be reconfigured without the need to shutdown and restart.

Simple for Users

- Sending Internet email is easy for users because Internet Exchange is fully integrated with their familiar cc:Mail client. Incoming messages arrive in private cc:Mail boxes. It's just like using cc:Mail.

High Performance

- Database backend engine provides fast address and destination host capability lookups.
- Internet Exchange simultaneously encodes, decodes, sends, and receives messages.
- 32-bit/multi-threaded technology.
- Fault Resilience (multiple concurrent gateway operation).

International Messaging Associates Limited

3/F Hong Kong Computer Center
54-62 Lockhart Road
Wan Chai
HONG KONG
Tel: +852 2520-0300
Fax: +852 2648-5913
Email: info@ima.com
WWW: <http://www.ima.com/>